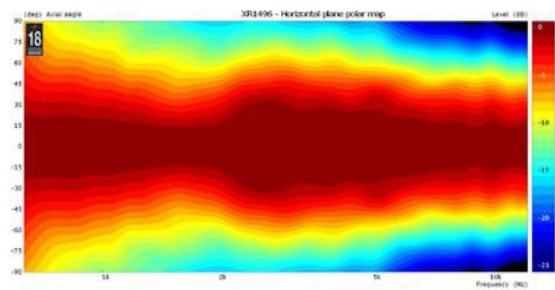
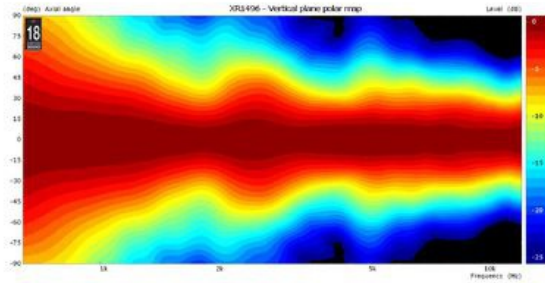


- 1.4 throat inch entry
- High damping composite structure
- Uniform on-axis and off-axis frequency response
- 90° x 60° horizontal and vertical constant coverage
- Very low distortion at high sound pressure
- Optimized weight thanks to composite material structure

The XR1496C has been designed in order to obtain a smooth frequency response maintaining constant coverage and directivity pattern, and avoiding the midrange narrowing effect as well as high frequency beaming problems.

With a throat entry of 1.4 inch, the XR1496C has been developed to reach the optimum performance when it will coupled with 1.4 inch exit Eighteen Sound high frequency compression drivers.

The XR1496C maintains nominal 90° Horizontal x 60° Vertical pattern control, providing consistent on-axis and off-axis frequency response from 1,2kHz to 16kHz in both horizontal and vertical planes. Horn directivity is constant down to 1,2kHz.



## SPECIFICATIONS

Throat Diameter	35 mm (1.4 in)
Nominal Coverage Horizontal	90 °
Nominal Coverage Vertical	60 °
Cutoff Frequency	0.8 kHz
Material	Composite material
Design	Constant directivity
Dimensions	270x270x180 mm (10.63x10.63x7.09 in)

## MOUNTING AND SHIPPING INFO

Baffle Cutout Dimension	240x240 mm (9.45x9.45 in)
Net Weight	1.4 kg (3.09 lb)