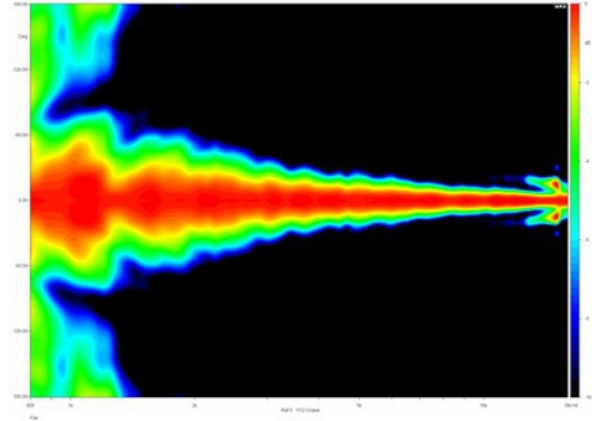
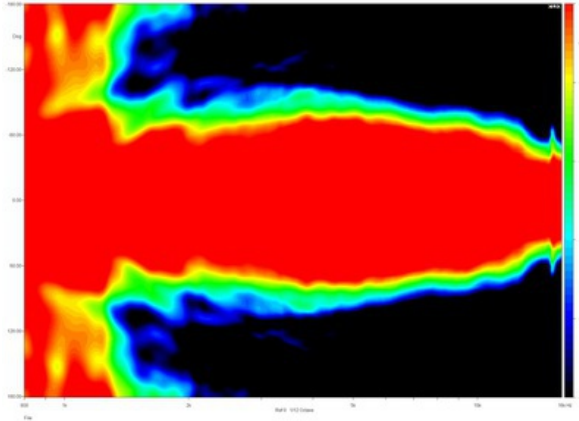


- 1.4" entry line-array source
- 10° vertical coverage angle
- Transmission line acoustical design minimizes internal reflections and acoustical losses
- Throat shape optimized for lowering air distortion
- Compact size for high arrayability
- Diecast aluminum construction

The XG14 is a 1.4 inch throat entry line-array waveguide. The specific transmission line acoustical design minimizes internal reflections and acoustical losses, while throat shape has been optimized for lowering air distortion. The XG14 has been optimised for obtaining a 10° vertical dispersion angle, while the horizontal coverage angle could vary from 80° to 120° depending on the specific cabinet design. The waveguide has been developed to obtain optimum performances when it will be coupled with 1.4 inch exit Eighteen Sound high frequency compression drivers.



**MOUNTING AND SHIPPING INFO**

Net Weight

1.0 kg ( lb)